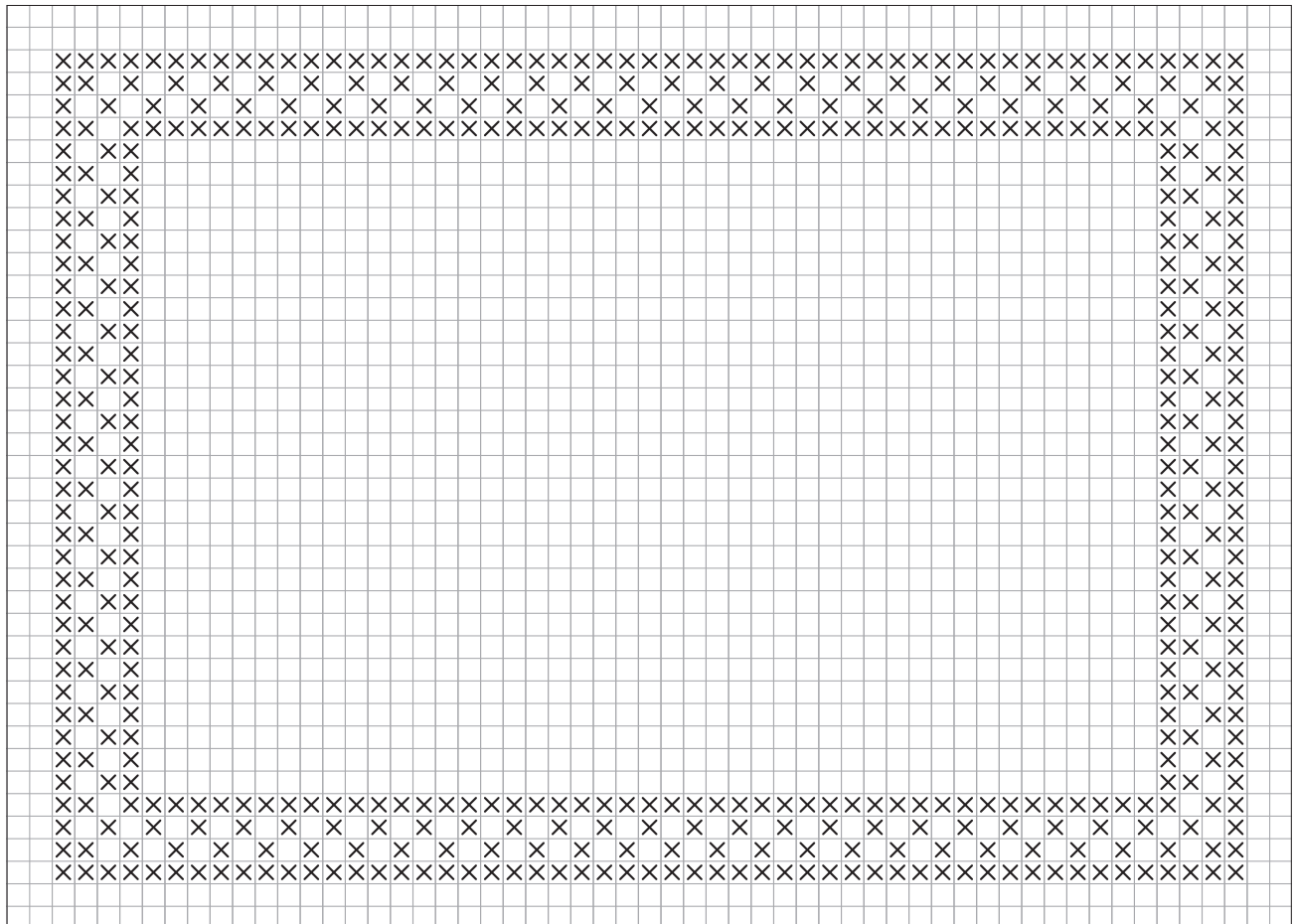


## BUTTON BOUQUETS

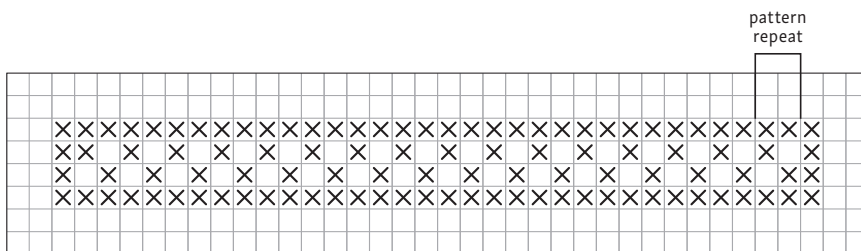
BY **PAT OLSKI** OF THE USA

*For colour photos and full details, see pages 70-75.*

The chart below has been adjusted to achieve a rectangular counted thread border for the pincushion when using 28-count evenweave linen.



**BUTTON BOUQUETS** | ADJUSTED PINCUSHION CHART



**BUTTON BOUQUETS** | TAPE MEASURE CHART

